

**SONY**

# Car Stereo Service Bulletin

Sony Service Company Technical Services  
A Division of Sony Corporation of America  
Sony Drive, Park Ridge, New Jersey 07656

**Model:** CDX-R77/79

**No.** 157 R1

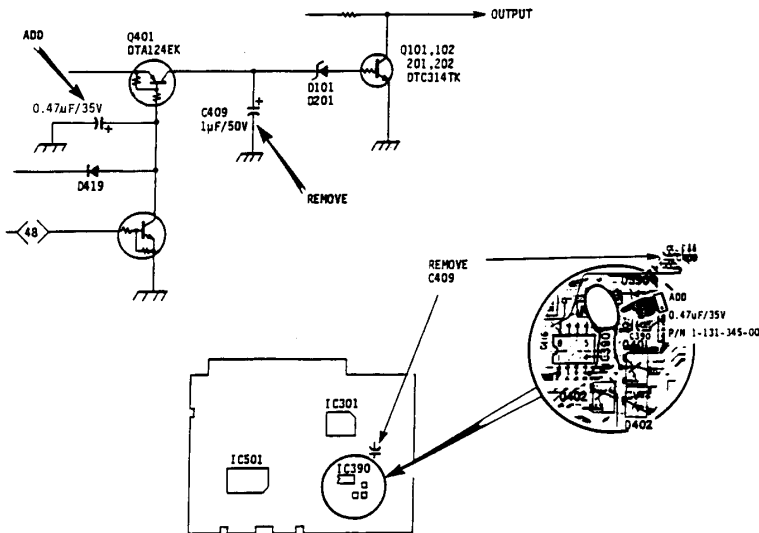
**Subject:** If Customer Complains Of Distortion **Date:** April 10, 1990

**Symptom:**  
(53)

When measuring distortion, the reading will initially be very high as player begins playing a track.

**Solution:** Remove Capacitor C409, and install a .47 $\mu$ F/35V Tantalum Capacitor (Part Number 1-131-345-00) from Pin 4 of IC390 to the base of Q401. Please note proper polarity.

**MAIN BOARD CIRCUIT & PATTERN**



Compact Disc  
CSA-14

Reference:

PRINTED IN U.S.A.  
SCA-14390-2